

Southern Baptist Disaster Relief

Flood Recovery

DRYING OUT A WET HOME





FLOOD RECOVERY





FLOOD RECOVERY

WHAT IS FLOOD RECOVERY?



- ❖ **REMOVING
WATER/MUD/WET
MATERIALS FROM
HOMES THAT HAVE
BEEN WET FROM
FLOODS OR
STORMS.**



FLOOD RECOVERY

WHY IS TRAINING IMPORTANT?



- ❖ **FLOOD WATERS CAN BE CONTAMINATED**
(RAW SEWAGE AND CHEMICALS)
- ❖ **TO ELIMINATE AN ENVIRONMENT THAT PROMOTES THE GROWTH OF MOLD.**
(WILL START TO GROW IN 48 HRS)



FLOOD RECOVERY

MOLD

- **MOLDS ARE TINY ORGANISMS THAT ARE A NATURAL PART OF THE ENVIRONMENT.**

(SUNLIGHT AND LOW MOISTURE)

- **MOLDS MULTIPLY INDOORS WHERE IT IS DARK, HAVE A SOURCE OF MOISTURE, AND FOOD. (LEAKS/FLOODS/HIGH HUMIDITY)(ORGANIC MATERIALS-WOOD, DIRT/CARPET/SHEETROCK)**





FLOOD RECOVERY

MOLD

Health problems caused by molds:

Irritation- burning eyes, congestion, cough, postnasal drip

Allergy- asthma, itchy watery eyes, congestion, cough, wheezing, tightness of chest, and difficult breathing

Poisoning and Infectious disease- rare but some will create chemicals that create serious illnesses or infections.



FLOOD RECOVERY

WE MUST BE PREPARED

FLOOD RECOVERY IS:

- ✓ **A DIRTY JOB**
- ✓ **WORKING IN WATER THAT CAN BE CONTAMINATED WITH CHEMICALS AND HARMFUL GERMS**
- ✓ **BEING PREPARED TO PROTECT YOURSELF FROM PHYSICAL AND HEALTH HAZARDS**



FLOOD RECOVERY PERSONAL EQUIPMENT

**YOU ARE RESPONSIBLE FOR YOUR OWN
PERSONAL PROTECTION EQUIPMENT(PPE)**

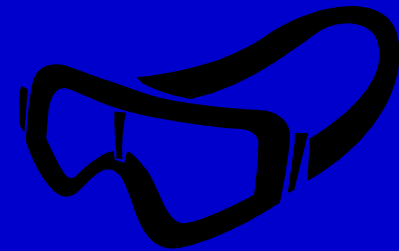
- LARGE RUBBER GLOVES AND LEATHER GLOVES (CUFF TO ELBOW)
- DURABLE RUBBER BOOTS (TO KNEE)
- MASKS
- HARD HATS





FLOOD RECOVERY

PERSONAL EQUIPMENT



- SWEAT BANDS
- RAIN SUIT (HEAVY DUTY)
- SAFETY GLASSES AND FACE SHIELDS
- MOSQUITO REPELLANT/SUN SCREEN
- PROTECTIVE CLOTHING



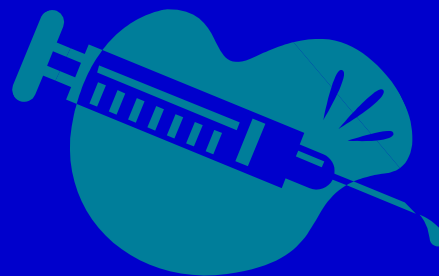
FLOOD RECOVERY

PERSONAL HEALTH ISSUES

- PRESCRIPTION MEDICATIONS

(IF YOU ARE TAKING IMMUNE SUPPRESSANT DRUGS YOU NEED TO TALK TO YOUR DOCTOR BEFORE YOU BECOME INVOLVED IN THESE ACTIVITIES)

- SHARE MEDICAL INFORMATION AND LIMITATIONS WITH LEADERSHIP
- CHECK WITH LOCAL HEALTH DEPT/CDC
- TETANUS & DIPHTHERIA BOOSTER EVERY 10 YEARS
- HEPATITIS A & B ?

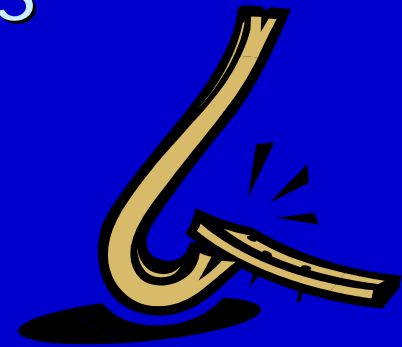




FLOOD RECOVERY

CREW EQUIPMENT:

- GENERAL CARPENTER HAND TOOLS
- PUMPS
- LADDERS
- APPLIANCE HAND TRUCKS/CARTS
- STRAPS, ROPES TO TIE DOWN
- PUSH BROOMS, MOPS, AND SQUEEGIES



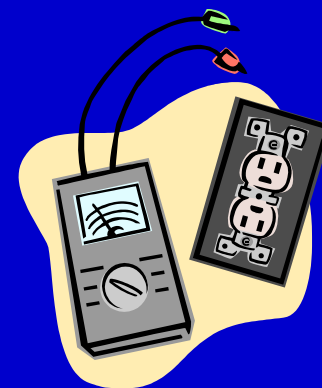


FLOOD RECOVERY

CREW EQUIPMENT:



- WHEELBARROWS
- SHOVELS, SQUARE AND ROUND
- HEAVY DUTY WET/DRY VAC (HEPA FILTER)
- PRESSURE WASHER
- CHALK LINE AND TAPE MEASURE
- ELECTRICAL CIRCUIT TESTER
(KNOW HOW TO USE IT)

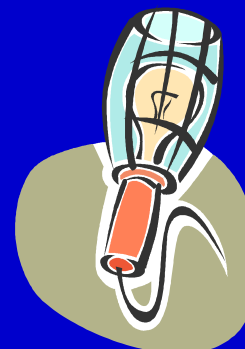




FLOOD RECOVERY

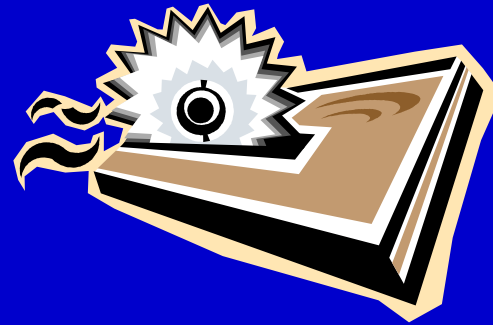
CREW EQUIPMENT:

- HEAVY DUTY TRASH BAGS
- CAUTION TAPE/DUCT TAPE
- FANS
- EXTENSION CORDS AND LIGHTS
- GENERATOR
- FIRST AID KIT (CHECK IT ON A REGULAR BASIS)
- GARDEN SPRAYERS AND/OR SQUEEZE BOTTLES FOR DECONTAMINATION SOLUTIONS





FLOOD RECOVERY



EQUIPMENT SAFETY

- IF YOU ARE UNFAMILIAR WITH MOTORIZED TOOLS, DO NOT ATTEMPT TO USE THEM UNTIL PROPERTY TRAINED!
- DO NOT WORK ALONE WHEN USING POWER SAWS.



FLOOD RECOVERY PROCEDURES

BEFORE ENTERING DAMAGED BUILDING

- **LOOK AT FOUNDATION:**
MISSING, CRACKED OR UNDERMINED
 - **LOOK FOR STRUCTURAL DAMAGE:**
DUE TO STORM, TREES, OR FLOOD
 - **LOOK AT UTILITIES:**
WATER, GAS, PROPANE, ELECTRICAL
- IS IT SAFE TO ENTER?**





FLOOD RECOVERY

PROCEDURES:

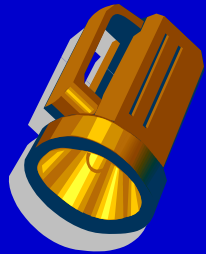
ENTERING A DAMAGED BUILDING

- **LOOK UP FOR WATER POOLED IN LIGHT FIXTURES OR CEILING ABOUT TO FALL**
- **LOOK AT THE FLOOR AND PROBE FOR HOLES OR HIDDEN DANGER WHEN WALKING IN WATER/MUD**



FLOOD RECOVERY PROCEDURES

ENTERING A DAMAGED BUILDING



- ✓ CARRY ADEQUATE LIGHTING
- ✓ BEWARE OF WILD ANIMALS, SNAKES, INSECTS, AND PETS IN DARK AND COVERED AREAS



- ✓ LOOK FOR LOOSE OR DANGEROUS MATERIALS, AND UNUSUAL CHEMICAL ODORS



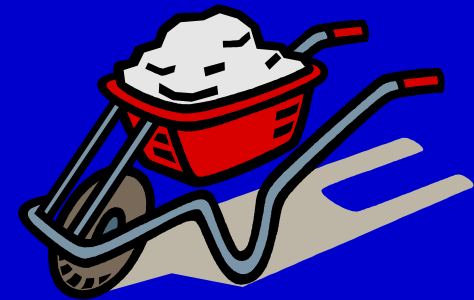
IS IT SAFE TO WORK IN?



FLOOD RECOVERY PROCEDURES

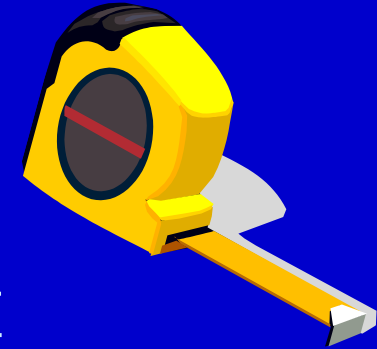
START CLEAN UP

- REMOVE ITEMS FROM HOME:
WORK WITH OWNER, SUGGEST 3 PILES-THROW
OUT/KEEP AND CLEAN/KEEP
- TAPE REFRIGERATORS AND FREEZERS SHUT
BEFORE MOVING
- USE WHEELBORROWS, CARTS AND HAND
TRUCKS TO MOVE HEAVY ITEMS





FLOOD RECOVERY PROCEDURES



CLEAN UP

- REMOVE MUD, SILT, TRASH FROM HOUSE
- DETERMINE HOW MUCH WALL AND FLOOR TO REMOVE (AT LEAST 12 INCHES ABOVE FLOOD LEVEL) (DISCUSS WITH HOMEOWNER)
- WET DOWN MOLD-CONTAMINATED SURFACES
- WHEN ALL BUILDING MATERIALS HAVE BEEN REMOVED, YOU WILL PRESSURE WASH EVERYTHING DOWN (NOT DRY AREAS)



FLOOD RECOVERY PROCEDURES





FLOOD RECOVERY PROCEDURES

CLEAN UP

- ✓ IS THERE A BASEMENT TO BE DRAINED?

FOLLOW PROCEDURES OR YOU CAN CAUSE
SERIOUS DAMAGE TO THE FOUNDATION.

(REPAIRING YOUR FLOODED HOME-PAGES 8 & 9)



FLOOD RECOVERY PROCEDURES



CLEAN UP

PUMPING PROCEDURES:

1. WHEN FLOOD WATERS OUTSIDE NO LONGER COVER THE GROUND, YOU CAN START PUMPING THE WATER OUT OF THE BASEMENT
2. PUMP THE WATER LEVEL DOWN 2 TO 3 FEET. MARK THE LEVEL AND WAIT 24 HOURS.



FLOOD RECOVERY PROCEDURES

CLEAN UP

PUMPING PROCEDURES:

3. CHECK THE WATER LEVEL THE NEXT DAY. IF THE WATER WENT BACK UP, IT IS TOO EARLY TO DRAIN THE BASEMENT.
4. WHEN THE WATER LEVEL STOPS GOING BACK UP, PUMP DOWN ANOTHER 2 TO 3 FEET AND WAIT OVERNIGHT.



FLOOD RECOVERY PROCEDURES:

CLEAN UP

PUMPING PROCEDURES:

5. REPEAT 3 AND 4 UNTIL BASEMENT IS DRY.

- REMOVE ALL EXCESS WATER FROM BUILDING
- DISINFECT ENTIRE AREA WITH BLEACH
(1/4 TO 1/2 CUP BLEACH PER GALLON WATER)
- USE CAUTION TAPE TO SECURE AREA
INCLUDE HOME OWNER IN THIS PROCEDURE



FLOOD RECOVERY PROCEDURES



DECONTAMINATION

HAND SANITIZER VS BLEACH WATER
(ALCOHOL VS. BLEACH) THERE IS A TIME FOR BOTH

DECONTAMINATE TOOLS, BOOTS AND GLOVES AT END OF DAY AND AT END OF EACH JOB

SANITATION ON JOB: TAKE SANITIZER AND HAND WASHING WATER TO JOB SITE. WASH HANDS AND FACE BEFORE EATING OR DRINKING

(CAUTION: HANDS IN ICE CHEST)

SANITATION OF VEHICLE?



FLOOD RECOVERY PROCEDURES

DECONTAMINATION

BE PREPARED TO TAKE SHOWER AT END OF DAY:

(ALL TOOLS ARE CLEAN AND BEFORE YOU ENTER EATING/LIVING/SLEEPING AREA)

- ✓ PREPARED CLEAN CLOTHING IN PLASTIC BAG
- ✓ HAVE A PLASTIC BAG FOR DIRTY CLOTHING
- ✓ HAVE BLEACH WATER READY TO RINSE BODY IN SHOWER
(2 TBSP. BLEACH IN GALLON OF WATER)
- ✓ GOOD SOAPY SHOWER AND SHAMPOO, DRESS IN CLEAN CLOTHING
- ✓ LAUNDRY (HOME OR JOB SITE)



FLOOD RECOVERY

CREW CHIEF RESPONSIBILITIES:

- MAKE SURE JOB FORMS ARE SIGNED BY HOME OWNER.
- MEETS WITH HOME OWNER AT START OF PROJECT TO REVIEW PROJECT.
- SIGNS CREW IN AND OUT THROUGH THE COMMAND POST



FLOOD RECOVERY

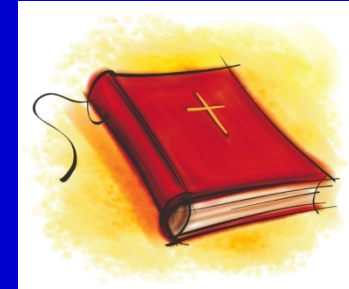
CREW CHIEF RESPONSIBILITIES:

- SECURES JOB SITE AT THE END OF DAY
- COMPLETES ALL PAPER WORK AND REPORTS, TURNED IN TO COMMAND AT END OF DAY (TBC JOB FORMS)
- REPORTS INJURIES OR UNUSUAL PROBLEMS TO COMMAND POST (TBC INCIDENT FORMS)



FLOOD RECOVERY

CREW CHIEF RESPONSIBILITIES:



- MAKES SURE CREW HAS FOOD, WATER, AND HAND SANITIZER FOR JOB SITE
- MEETS WITH HOME OWNER AT COMPLETION OF PROJECT. (HOME OWNER SATISFIED/PRAYER/BIBLE)
- SEE THAT BORROWED OR LOANED EQUIPMENT IS PROPERLY DOCUMENTED/RETURNED
- MAKES SURE CREW HAS DEVOTIONAL AND DEBRIEFING TIMES



FLOOD RECOVERY

RESPIRATORY PROTECTION FOR VOLUNTEERS

IT IS IMPORTANT TO KEEP IN MIND THAT YOUR ACTIVITIES, AS A VOLUNTEER, DO NOT HAVE PROTECTION UNDER THE LAW.

YOU ARE RESPONSIBLE FOR YOUR OWN PROTECTION.

YOU NEED TO PROTECT YOURSELF FROM BREATHING IN INSULATION, CONCRETE DUST/DIRT AND MOLDS DURING THESE ACTIVITIES.



FLOOD RECOVERY

RESPIRATORY PROTECTION

WHY ARE RESPIRATORS NEEDED?

REMEMBER Health problems caused by molds?

Irritation - burning eyes, congestion, cough, postnasal drip

Allergy - asthma, itchy watery eyes, congestion, cough, wheezing, tightness of chest, and difficult breathing

Poisoning and Infectious disease - rare but some will create chemicals that create serious illnesses or infections.

The main way that mold gets into you is by breathing (inhalation).



FLOOD RECOVERY RESPIRATORY PROTECTION

**SURGICAL MASKS AND SINGLE LAYER MASKS
DO NOT GIVE YOU THE PROTECTION YOU NEED.**

**THE N95 PARTICULATE FILTER MASK IS
ACCEPTABLE FOR MOST OF OUR
ACTIVITIES.**

(N95 PARTICULATE MASKS ARE NIOSH APPROVED WHEN PROPERLY FITTED.)

THEY CAN BE PURCHASED AT LOWE'S, HOME DEPOT, WAL-MART, AND MOST HARDWARE STORES.



FLOOD RECOVERY

RESPIRATORY PROTECTION

- FOLLOW THE FITTING INSTRUCTIONS EACH TIME THE MASK IS USED.
- IF YOU MUST REMOVE MASK DURING USE, DISCARD, STORE IN A CLEAN PLASTIC BAG, OR FOLD AND LOWER TO NECK FOR SHORT PERIODS OF TIME.
- IF YOU DO NOT FEEL COMFORTABLE USING A DISPOSABLE MASK, YOU SHOULD CONSULT YOUR DOCTOR AND HAVE A RESPIRATOR PROFESSIONALLY FITTED TO YOUR FACE.



FLOOD RECOVERY

FORMS:



- ✓ **TBC VOLUNTEER PERSONAL/MEDICAL INFORMATION FORM.** (ALL VOLUNTEERS MUST HAVE ONE)
- ✓ **TBC INCIDENT/INJURY FORM** (MUST BE FILLED OUT FOR INJURY OR INCIDENT)
- ✓ **TBC JOB FORM** (PERMISSION TO WORK ON PROPERTY) (USE IN AND OUT OF STATE)



FLOOD RECOVERY

REFERENCE MATERIALS

REPAIRING YOUR FLOODED HOME

ARC 4477 OR FEMA 234

STEP 2, PAGE 8 & 9-PUMPING A BASEMENT

STEP 4, PAGE 15-DRY OUT YOUR HOME

STEP 6, PAGE 21-RESTORE THE UTILITIES

STEP 6, PAGE 25 CLEAN UP

(GIVES A COMPLETE LIST OF SUPPLIES AND PROCEDURES FOR CLEANING HOME AND THE ITEMS IN IT)



FLOOD RECOVERY

REFERENCE MATERIALS

TBC REFERENCE MANUAL/PASSOUT

PLEASE NOTE:

THERE IS CLEAN UP INFORMATION IN BOTH OF THESE REFERENCES THAT WE WILL NOT ROUTINELY DO. THIS INFORMATION MAY BE SHARED WITH HOMEOWNERS BUT MAKE SURE THEY KNOW THAT WE DO NOT RECOMMEND THESE PROCEDURES AND DO NOT ROUTINELY DO THEM.